

Table

Design Guglielmo Poletti

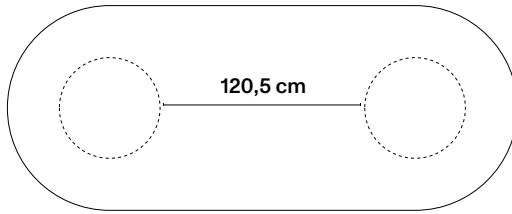
MM8

Istruzioni di montaggio
Assembly instruction
Montageanleitung
Instructions de montage
Instrucciones de montaje

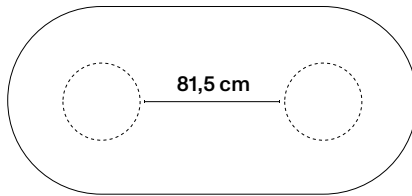
DESALTO

Installation

Step 1



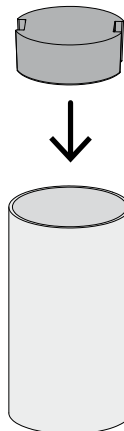
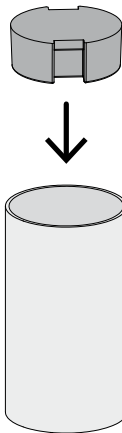
299 × 120 cm



240 × 110 cm

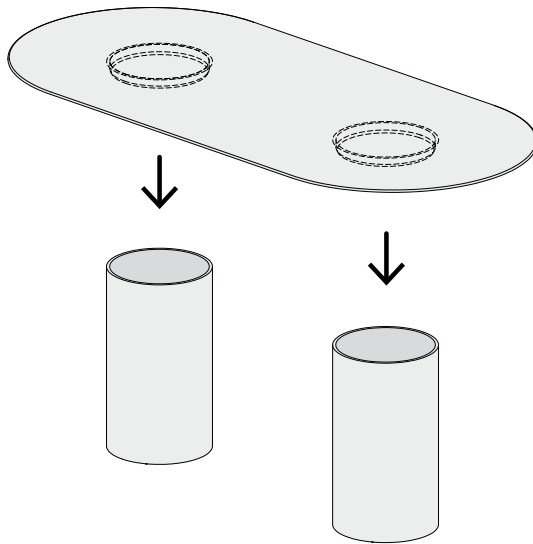
Installation

Step 2



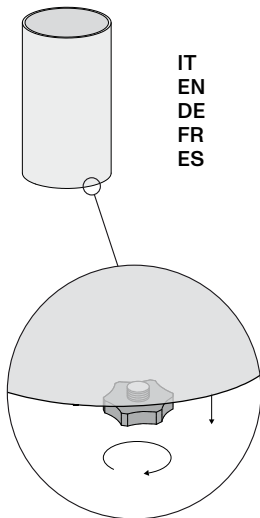
Installation

Step 3



Installation

Step 4



IT
EN
DE
FR
ES

Regolare il piedino dopo aver inserito le zavorre.
Adjust the foot before inserting the weights.
Stellen Sie den Fuß nach dem Einsetzen der Gewichte ein.
Réglez le pied après avoir inséré les poids.
Ajuste el pie después de insertar los pesos.

Desalto Spa
Via per Montesolaro
22063 Cantù (CO)
Italy

T. +39 031 7832211
F. +39 031 7832290
info@desalto.it
www.desalto.it

06 / 2023

DESALTO